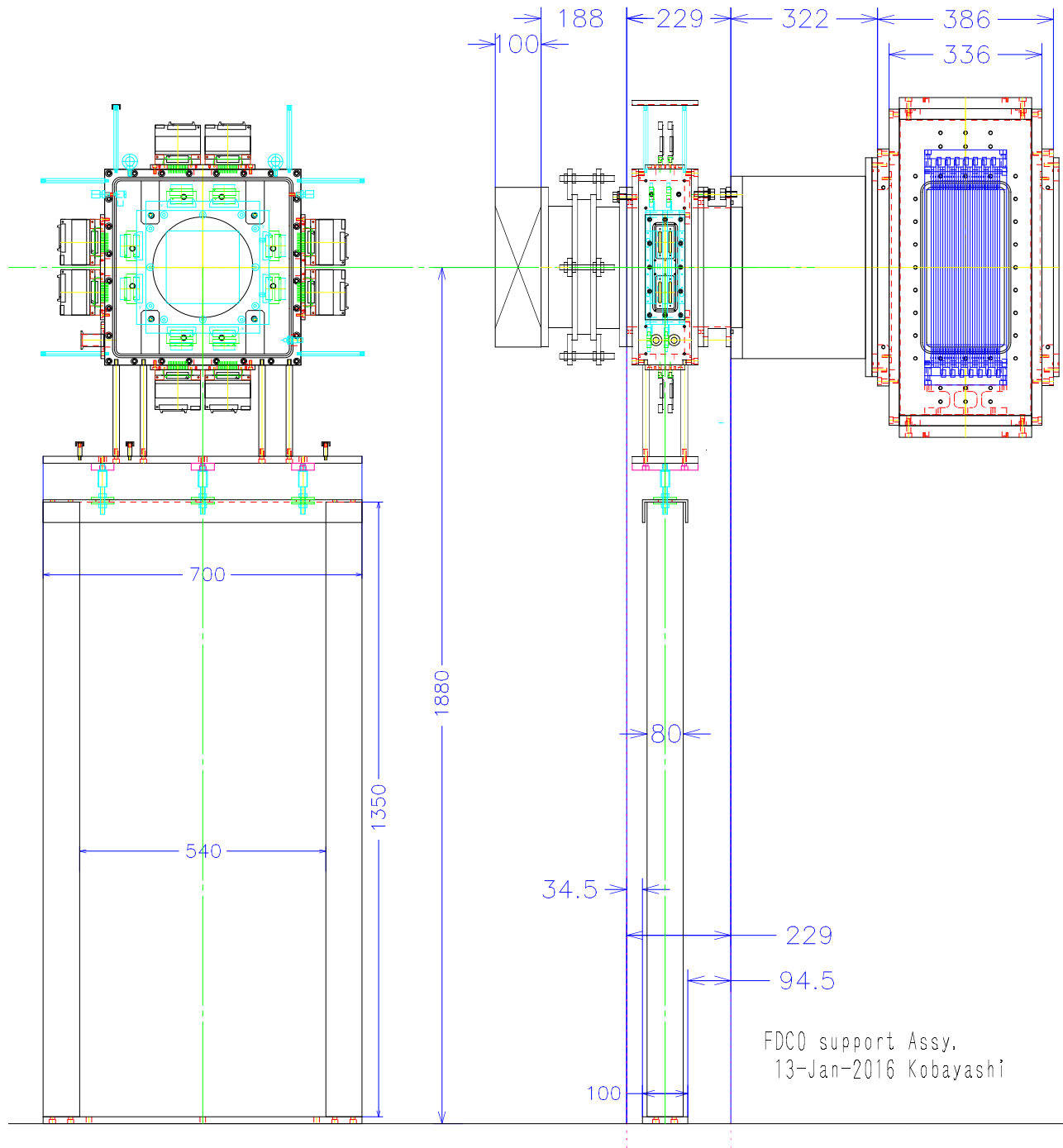


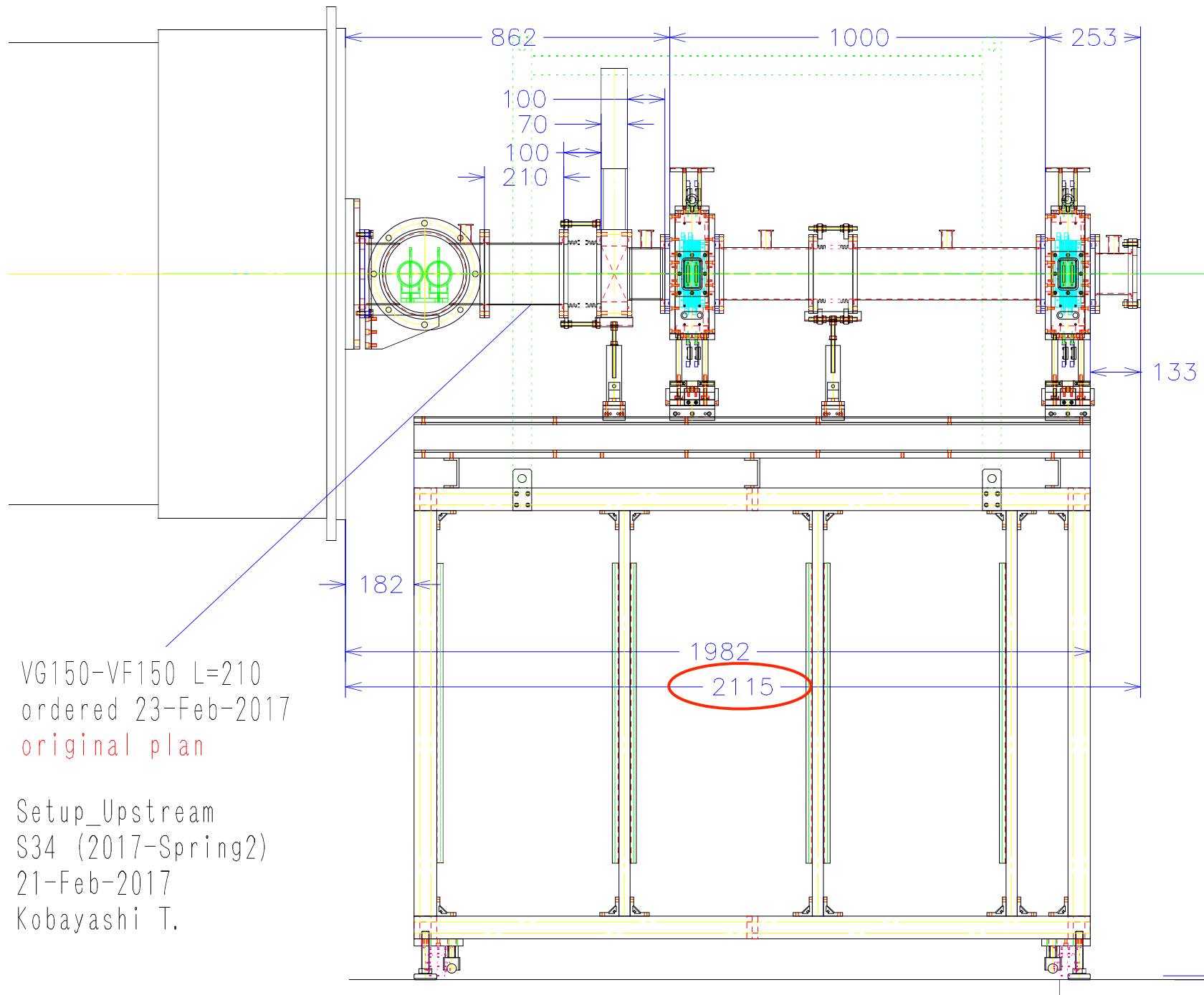
## Memo on FDC0 for S34 (,S19, S37)

---

- FDC0 configuration
- SBT, BDC1, 2 configuration
  - original plan
  - modified plan for making space for FDC0
- Plan by Zaihong, 15-Mar-2017
  - please move further upstream



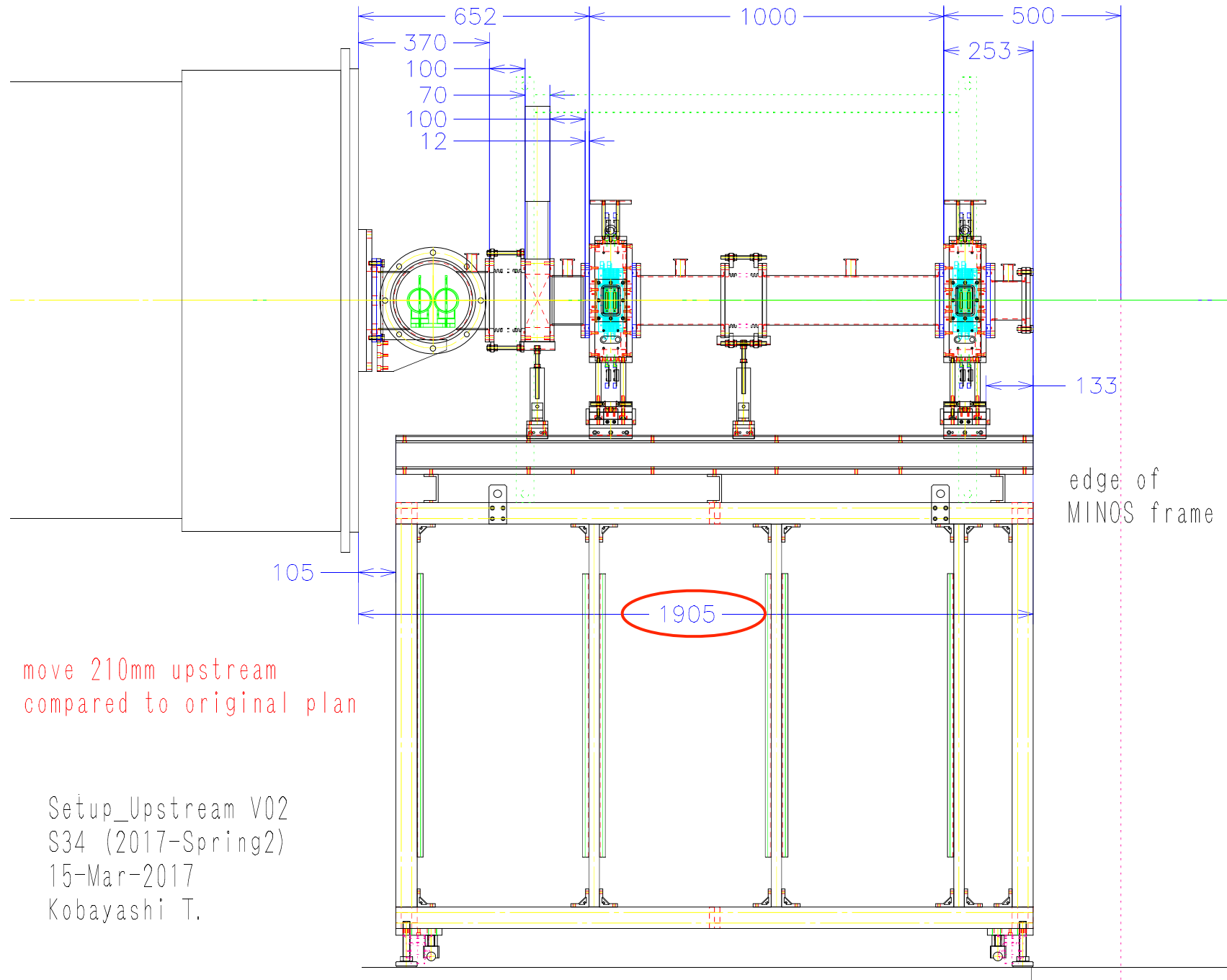
FDC0 support Assy.  
13-Jan-2016 Kobayashi



VG150-VF150 L=210  
ordered 23-Feb-2017  
original plan

Setup\_Upstream  
S34 (2017-Spring2)  
21-Feb-2017  
Kobayashi T.

# SBT, BDC1, 2 : modified plan v02 : $\Delta z = -210$ mm



SAMURAI34 configuration (20170313, with FDC0)

