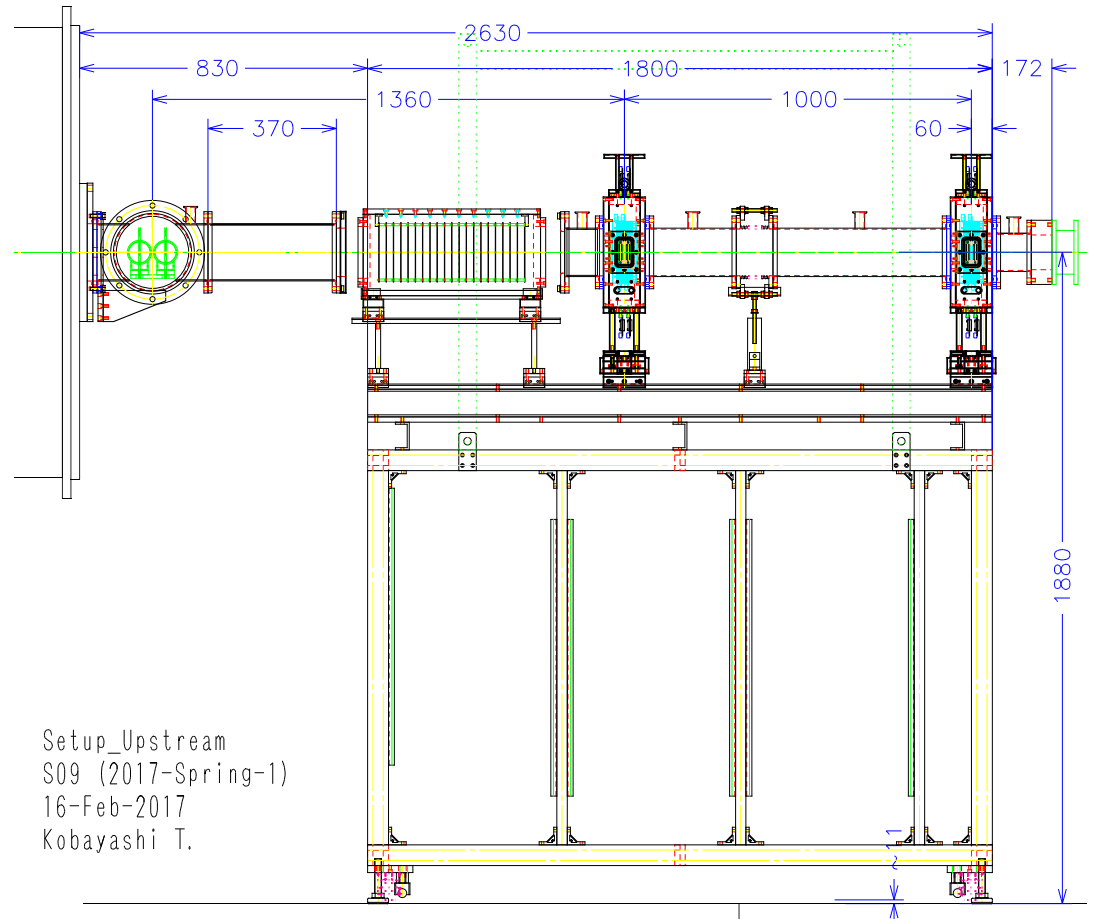


Memo for Exp_Samurai_2017spring

works done 16~17-Feb-2017

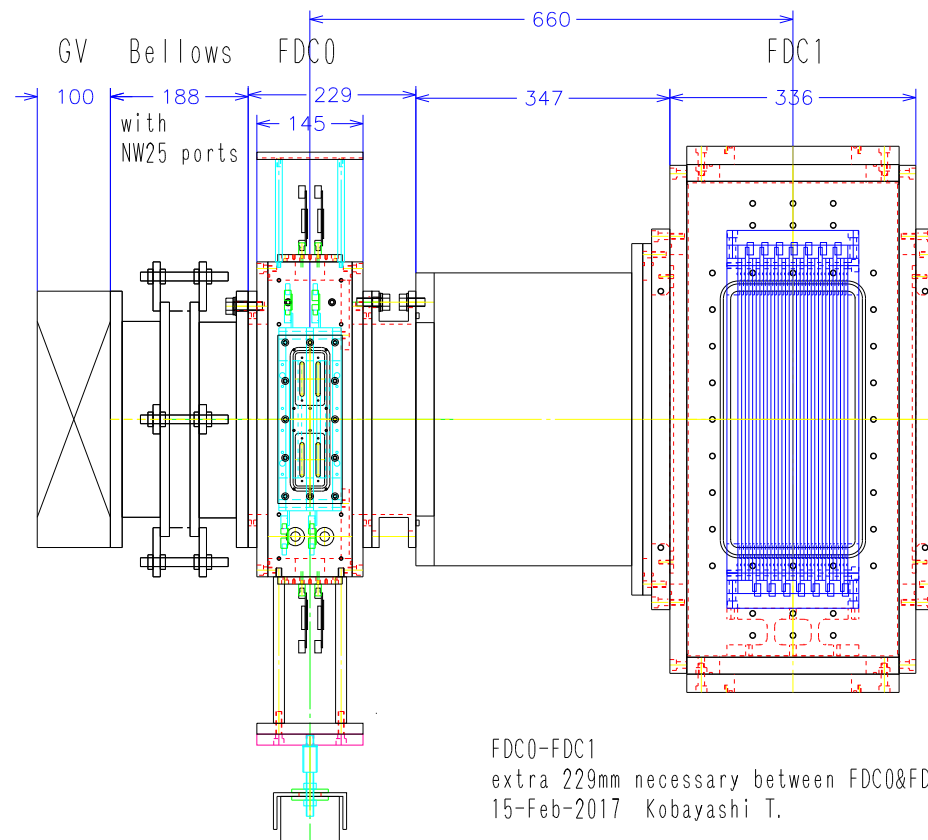
- S09 (Apr-2017)
 - SBT, BDC1,2
 - FDC1
 - (FDC0)
 - FDC2
 - ICF
 - (KMWPC)

- BDC detector stand
 - alignment @ 15-Feb-2017
 - $d(\text{STQ-BDC2}) = 2630 \text{ mm}$ (~1 mm shorted than originally planned)
- SBT
 - extension beam pipe (L= 370 mm) added
 - 0.2mmt plastics : to be changed
- ICB
 - P10 flow started

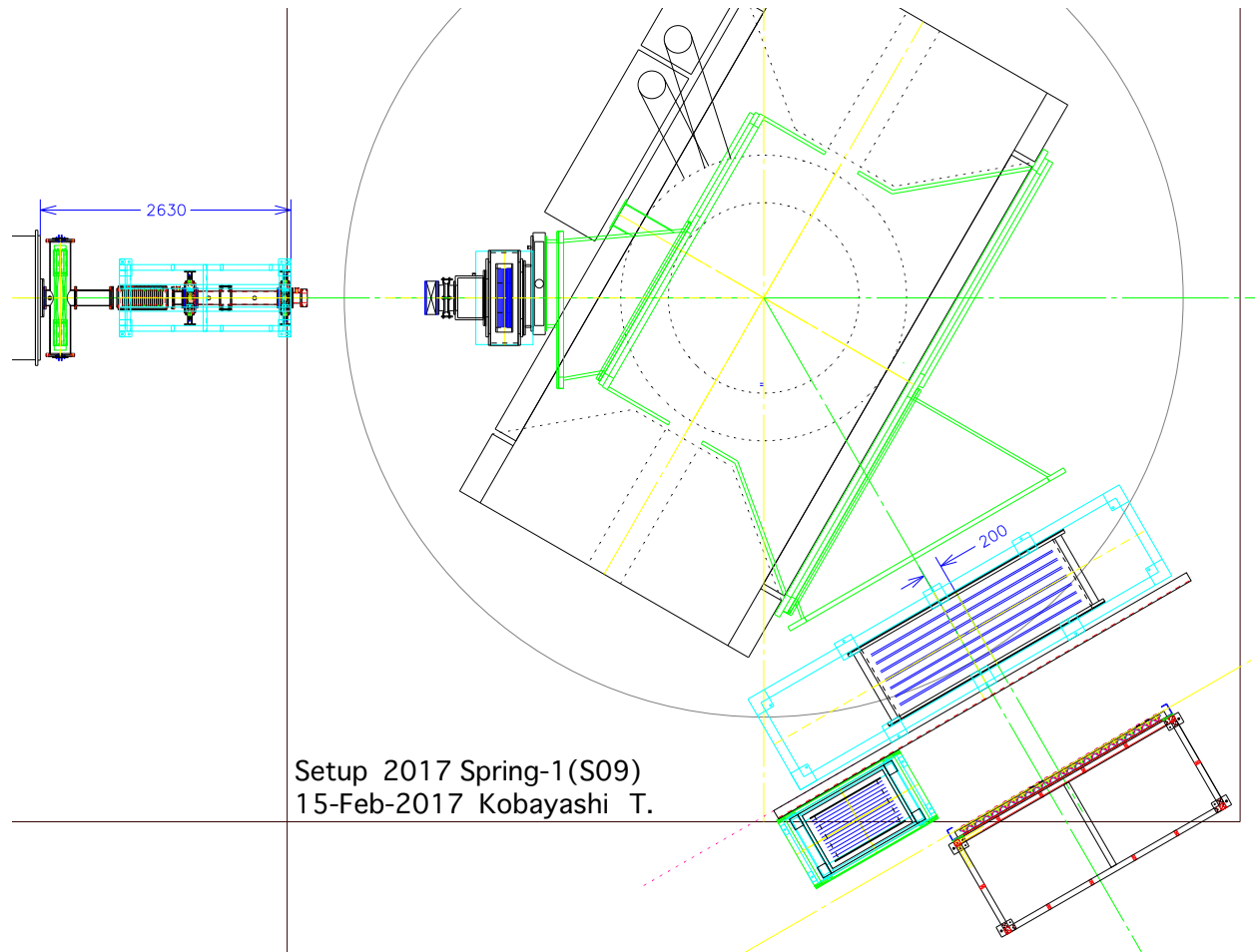


-
- 28 ASD's replaced
 - ASD ($\tau=16$ nsec) for higher rates ← ASD ($\tau= 80$ nsec)
 - 交換作業
 - 下流側に物が無くアクセスが比較的自由的な状態でも"とんでもなく"大変だった。実験中の交換はほぼ不可能。

- Purpose
 - for low-pressure operation & scattering angle determination using FDC0 & FDC1
 - d(FDC0-FDC1)~ 660 mm
 - $\rightarrow \sigma_{\theta} < 1$ mrad after the target w/o assuming target position
 - possibility of reaction vertex \leftarrow BDC1,2 & FDC0,1
 - extra 229 mm necessary to insert FDC0 including pipe & insulation franges
- Installation tested @15-Feb-2017



- Alignment @15-Feb-2017
 - +200 mm high rigidity side from 60-deg line ← -100 mm (Dec-2016)
- gas
 - He + 60%CH₄ + iso-propanol, gas flow started



- Plan
 - guide rail on the floor ← upstream side of ICF stand
 - to be fixed on the floor
- status
 - home position
 - low rigidity side, not interfering HODF24
 - see previous page
 - connection
 - HV(10m) x2, signal (15m) x8, gas, (network x2)
 - P10 gas : flow started
 - HODF24
 - tentative position



- prototype proton detector in Samural vac. chamber
 - cathode-readout MWPC : K_x , A_y , K_u , A_x , K_y
 - gas windows : Kevlar, Kevlar+100um PET
- placed in vac. chamber
 - with 2 trigger scintillators
 - for further low-pressure operation test

