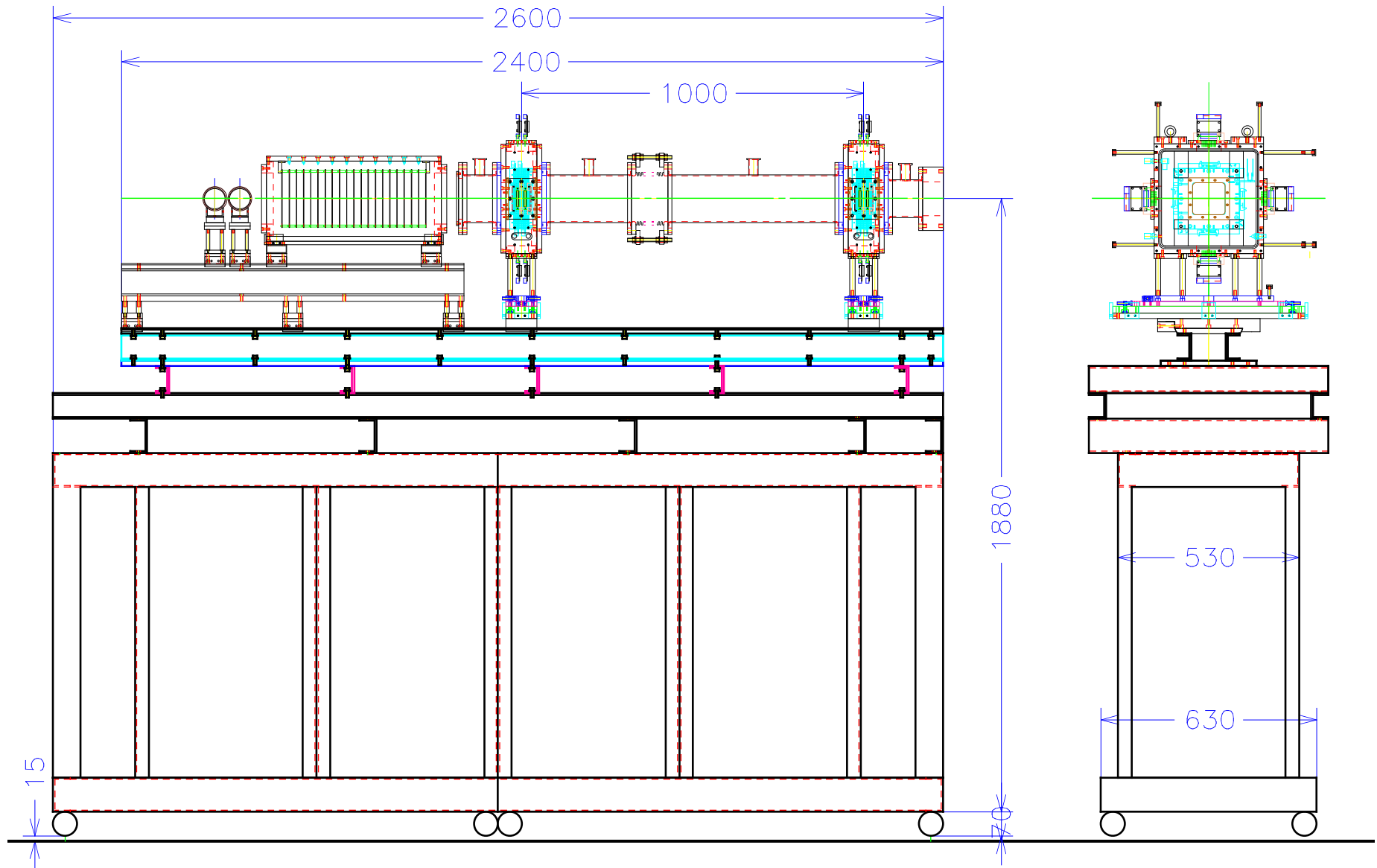
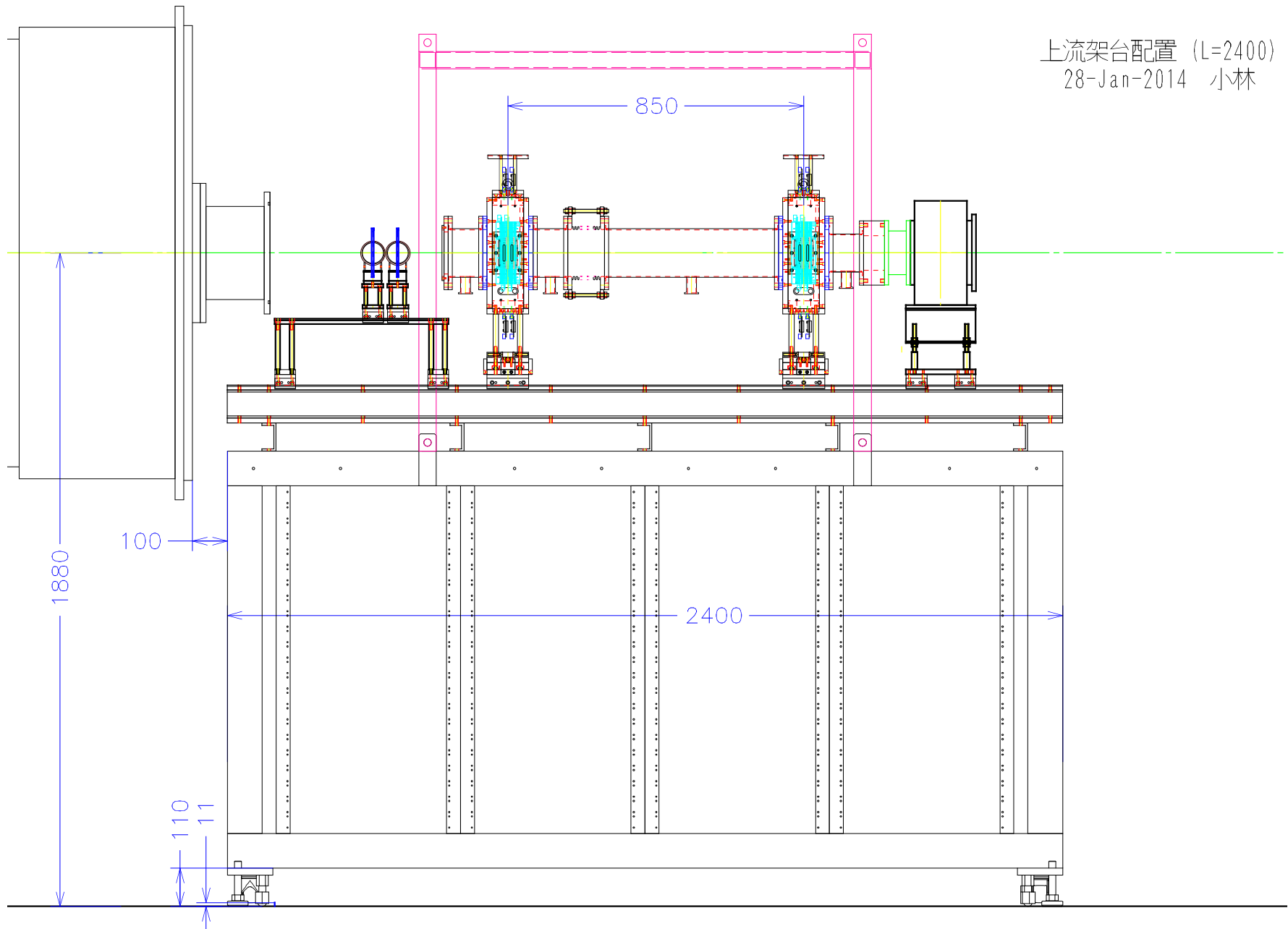


Memo on SBT/ICB/BDC Stand

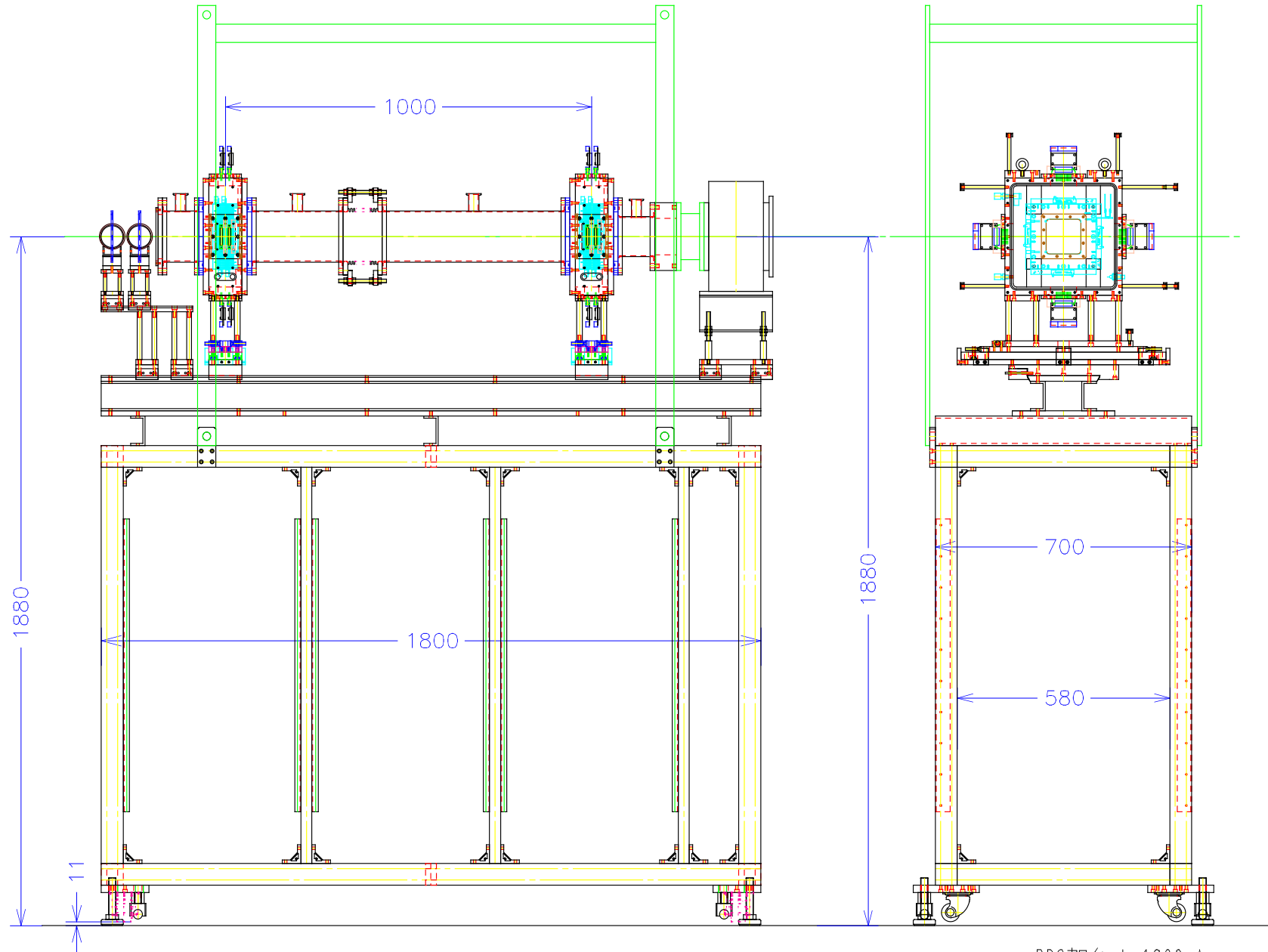
- BDC Stand : "5"-types



Upstream (SBT, ICB, BDC) Stand Assy.
1-Mar-2012 Kobayashi T.

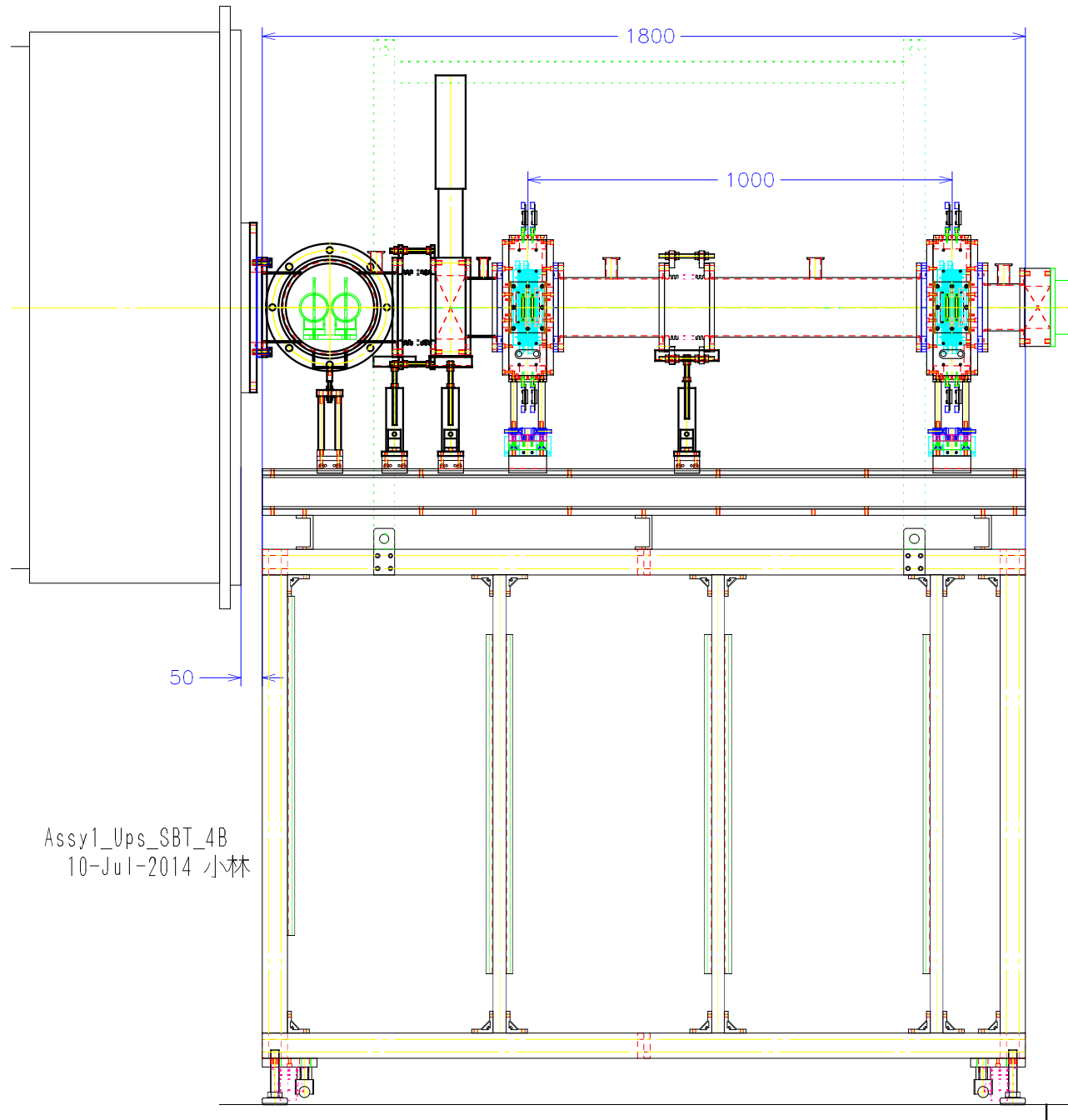


上流架台配置 (L=2400)
28-Jan-2014 小林



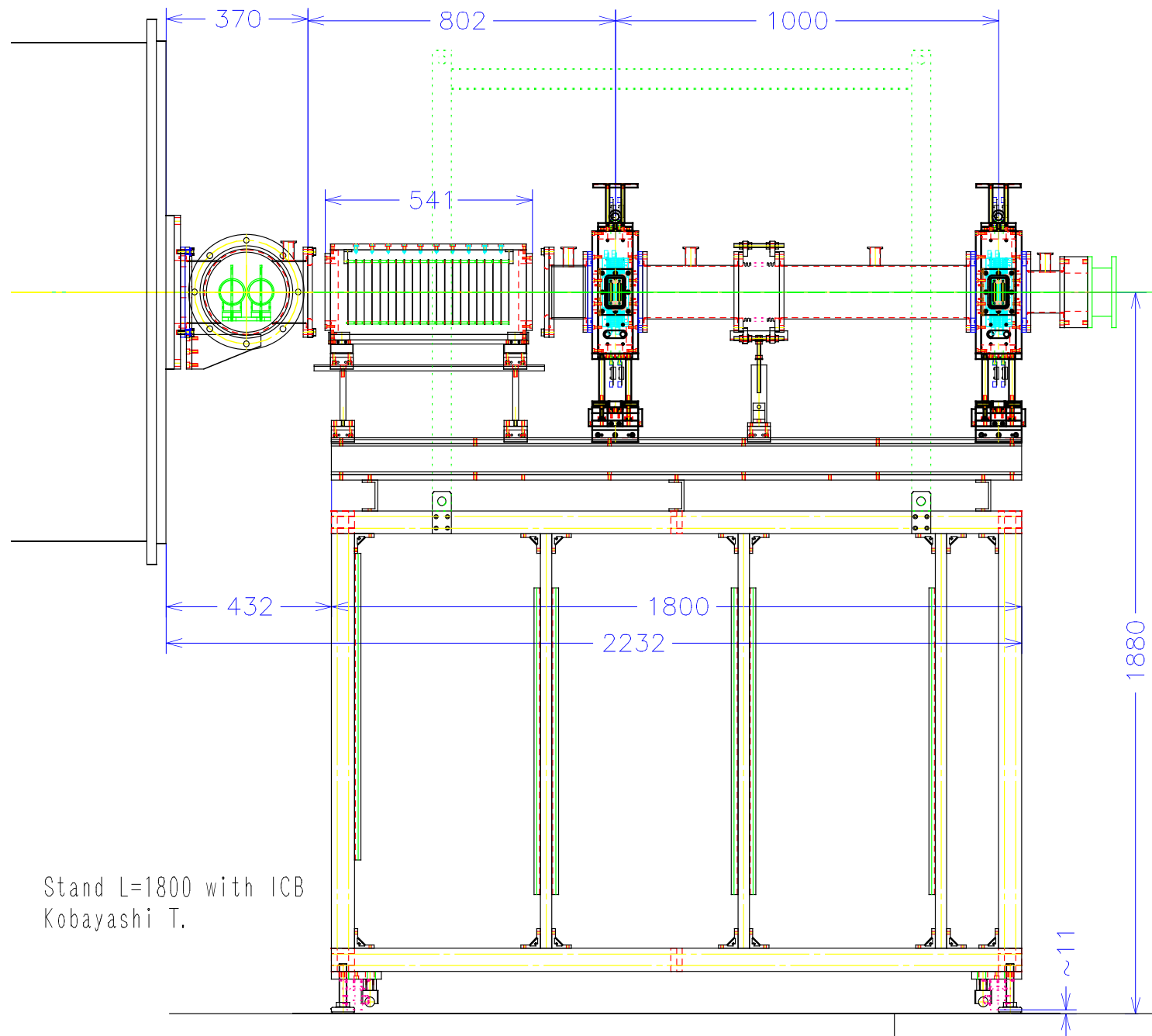
BDC架台 L=1800 Assy
2-Jul-2014 小林

2014-3A : L=1800 direct vac. connection



Assy1_Ups_SBT_4B
10-Jul-2014 小林

2014-3B : L=1800 with air gap & ICB



Stand L=1800 with ICB
Kobayashi T.