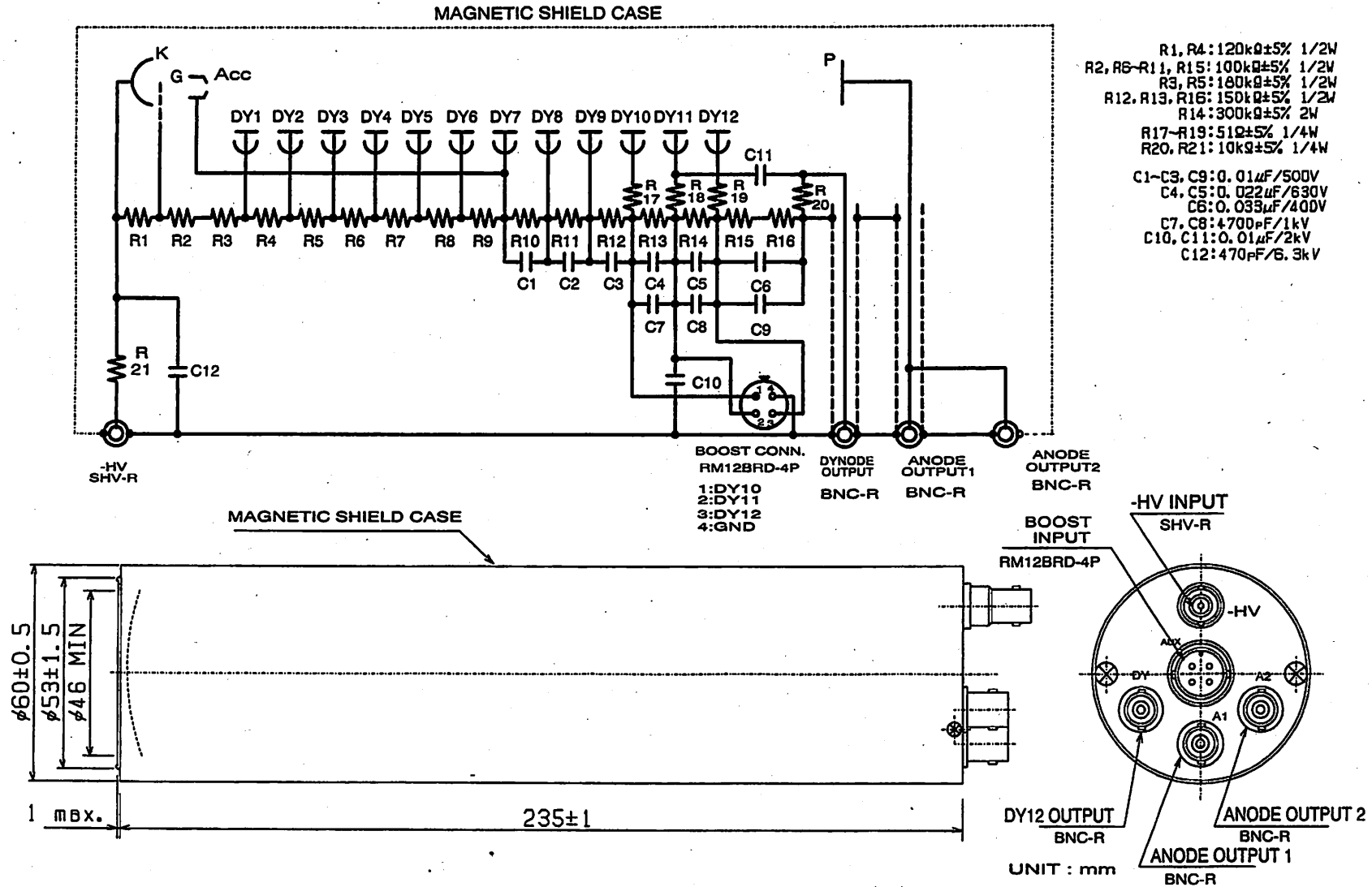


This information is furnished for your information only.
 No warranty, expressed or implied, is created by furnishing this information.



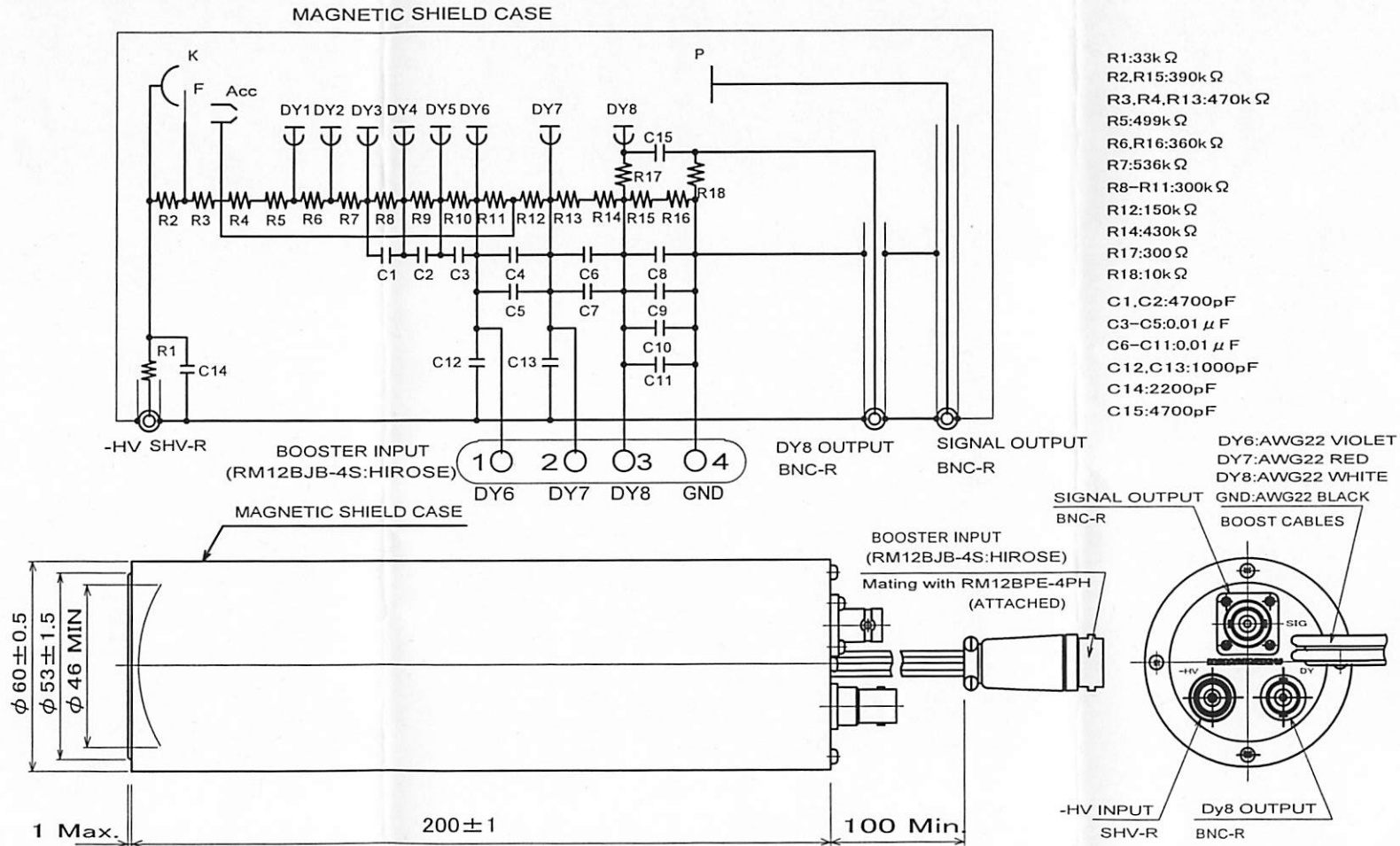
H1949-50MOD
 WITH BOOST INPUT

DIMENSIONAL OUTLINE AND VOLTAGE DIVIDER CIRCUIT

DATE 17. Jan. 2005
 Ref.#1949-050117

HAMAMATSU
 HAMAMATSU PHOTONICS K.K. Electron Tube Division

This information is furnished for your information only.
 No warranty, expressed or implied, is Created by furnishing this information.



- R1:33k Ω
- R2,R15:390k Ω
- R3,R4,R13:470k Ω
- R5:499k Ω
- R6,R16:360k Ω
- R7:536k Ω
- R8-R11:300k Ω
- R12:150k Ω
- R14:430k Ω
- R17:300 Ω
- R18:10k Ω
- C1,C2:4700pF
- C3-C5:0.01 μ F
- C6-C11:0.01 μ F
- C12,C13:1000pF
- C14:2200pF
- C15:4700pF

- DY6:AWG22 VIOLET
- DY7:AWG22 RED
- DY8:AWG22 WHITE
- GND:AWG22 BLACK

H2431-51MOD. DIMENSIONAL OUTLINE AND VOLTAGE DIVIDER CIRCUIT with booster connector.

DATE 18.Aug.
 2004
 Ref.#2431-040818